



50 Sunninghill Road Goulburn NSW

Stunning Solar Passive, Architect-designed Home on 25+ Acres

A beautiful, architecturally-designed, solar passive home, sitting on over 25 acres of native bushland, with some cleared areas.

Four good-sized bedrooms, main with walk-in robe and spacious ensuite; all other bedrooms have built-ins.

Taking advantage of the northern aspect, are the spacious, light living areas:

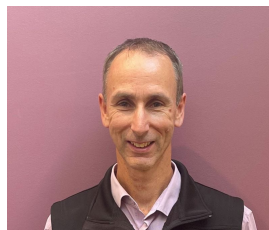
- Huge open-plan family and dining, opens to the amazing timber kitchen, with loads of cupboard and bench space, dishwasher and generous walk-in pantry.

4 2 2

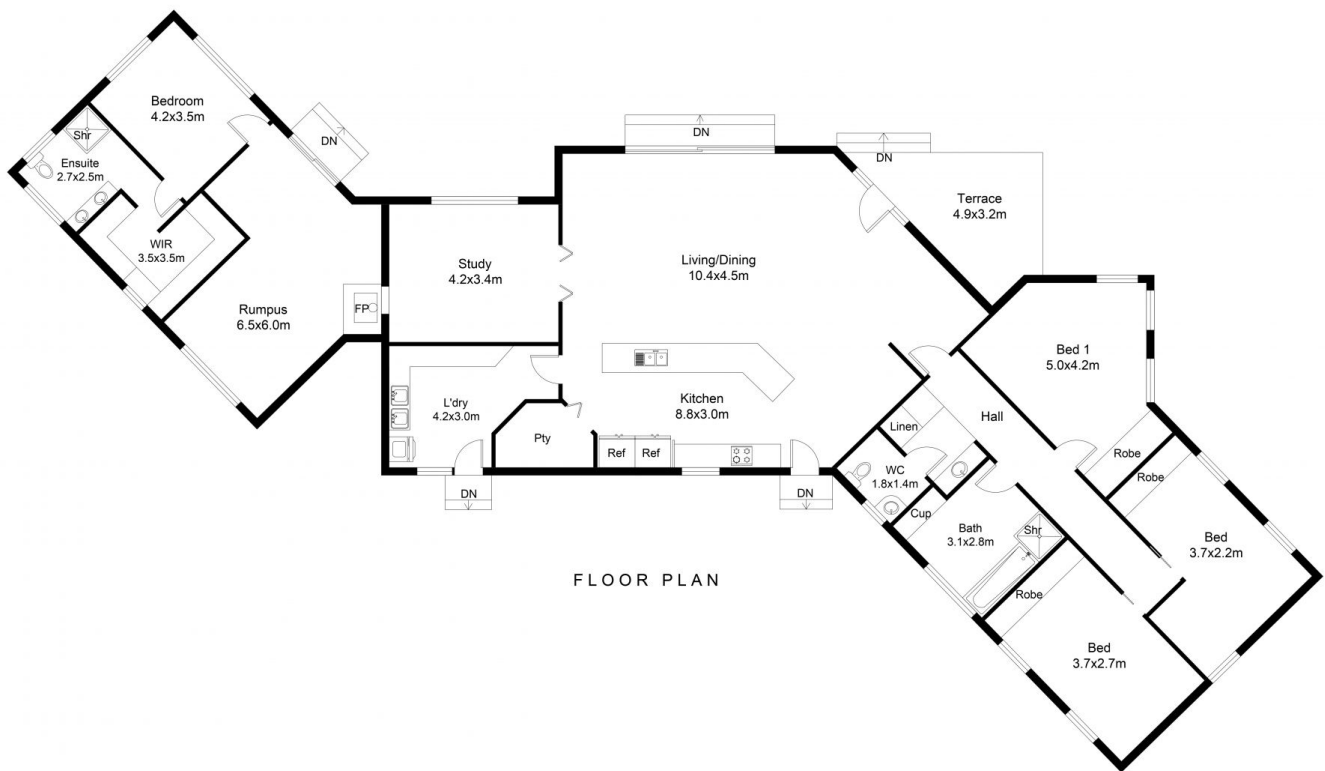
Price : \$ 969,000

Land Size : 10.45 ha

View : <https://www.angellastorrierrealestate.com.au/sale/nsw/southern-tablelands/goulburn/residential/rural/8117032>



Brett Storrier
02 4821 9842



FLOOR PLAN

This floor plan including furniture, fixture measurements and dimensions are approximate and for illustrative purposes only. All enquiries must be directed to the agent, vendor or party representing this floor plan.

50 Sunninghill Road